



Friday 8<sup>th</sup> March 2019

<https://www.barnesfarminfants.co.uk>

### Message from the Headteacher

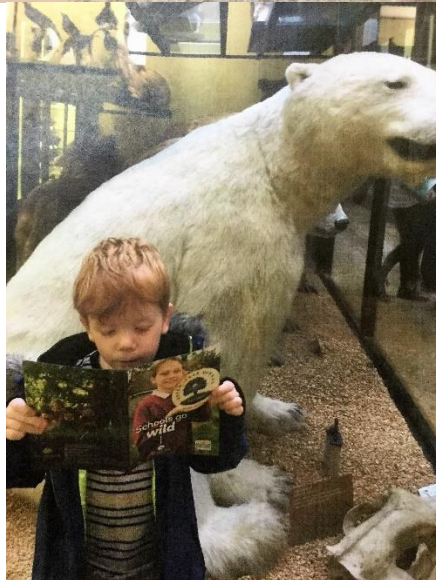
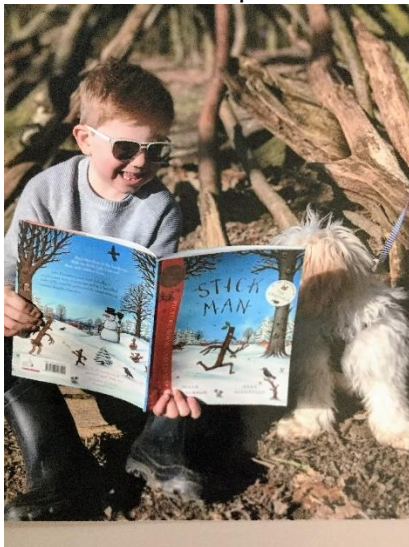
Dear Parents and Carers,

#### World Book Day

The children looked fantastic on Thursday in their fancy dress outfits. Thank you all for supporting the day. There were lots of activities taking place throughout the day including the teachers pitching to the children to read them their favourite book. The competition entries were of a very high standard and we were very impressed.

#### Extreme Reading Photograph

Well done to all the children who took part in the Extreme Reading competition. What strange places our children found to read their beloved books in! It was very difficult to decide upon winners. Our winners were applauded in Achievement assembly and given a beautiful new storybook to take home and read in a not-so-extreme place. William K took his Stick Man book along with him as he walked around a Stick Man trail in a forest, Emmy built a Story chair out of books and read upside down (thank you Daddy) and Harvey who read his favourite book in front of the polar bear 'in a big tower.'



### **Red Nose Day**

It is Red Nose Day on Friday the 15th and although we will not be holding a fundraising event, children are welcome to wear their red noses or Red Nose Day t-shirts.

### **Scooters and Bikes**

We promote children using scooters and bikes to come to school but we ask that these are walked through the school site. The beginning and end of day on the playground are busy times and we need to ensure everyone's safety. This also applies to siblings joining parents and careers on the school run. Thank you for your support.

### **DIY SOS**

On Saturday 23<sup>rd</sup> March, we are holding a DIY SOS day. We have held several of these days in the past, where we invite all members of the local community to support school development and improvement. Past examples were painting the outside classrooms, painting the intervention room and gardening. This term, our DIY SOS day will focus on the following:

Painting - areas of the school

Gardening - clearing and improving areas

Library books - adding library tickets to our books so the children can experience a loan system

As you can see there are a variety of jobs to be undertaken on the day and we are asking for anyone from our school community who is prepared to help us, even for an hour, to come along. If anyone knows any businesses or local companies that would be able to help, please ask them to email the school ([admin@barnesfarm-inf.essex.school.uk](mailto:admin@barnesfarm-inf.essex.school.uk)) or sign up on the below link. So if you are a parent, carer, grandparent, older sibling who is over 18 and can give up an hour, morning, afternoon or even a day, please sign up to the link below to join us. Without our volunteers, we would be unable to achieve so much as a school and any help is very much appreciated.

<https://www.barnesfarminfants.co.uk/form/?pid=3&form=397>

### **Phonic Workshop for Year 1 Parents and Carers**

Thank you to all that joined us this week to hear about the Year 1 Phonics screening which takes place in the summer term. If you missed Mrs Speller's workshop, we will be adding the PowerPoint to the website and you can also speak to class teachers or Mrs Speller about the content.

Mrs Farmer



## Attendance

Our attendance target for the year is **97%**.

Best class attendance this week was **Barn Owl with 97.7%**. Well done to Barn Owl!

Whole school attendance this week was **98.4%**.

Whole school attendance for the year so far is **96.8%**.

We continue to encourage and reward excellent attendance at Barnes Farm Infant School. Please remember to call the office if your child is absent for any reason.

**Please be aware that regulations changed from 1 October 2017. Any 10 unauthorised sessions taken over a 10-week period can now be subject to a Penalty Notice being issued (1 session is a morning or afternoon). Remember that the school cannot authorise any holidays in term time.**

## Achievement Certificates

Well Done to the following Stars of the Week



Badger – Ronnie

Fox - Ada

Rabbit – Joseph

Hedgehog – Olly

Squirrel – Joey

Otter – Ella

Tawny Owl – Katie

Barn Owl – Poppy

Snowy Owl – Kaiyla

Mathematical Wizards of the Week

Reception – Olivia

Year 1 – Joshua

Year 2 – Oliver



Well Done Children!

## Bookworms of the Week

Well done to all the Super readers this week for reading 5 times at home. **Congratulations to Oliver B from Tawny Owl class** who won the prize draw for reading at least 5 times this week. His name was picked out of the cupcake pot and he chose one of Mrs Speller's special books from the basket to take home.

**Snowy Owl class** were the winning classes who recorded the most children who had read 5 times or more this week and got to choose a new book for their class library 89% of their children reading 5 times this week.



## Well Done Bookworms. Keep Reading!

### SCHOOL COUNCIL

We had a very important job to do this week in our School Council meeting. The winning entries for the Bookmark competition were photocopied and we cut them out very carefully whilst Mrs Speller laminated them. We are going to sell them from the library next week for 30p. All children are welcome to bring in 30p to buy a bookmark on Thursday and Friday. All money raised will go towards our library zone.



## WORLD BOOK DAY

What a wonderful day of sharing books we had on Thursday. Our children looked spectacular as they dressed up as their favourite book characters and enjoyed a day jam-packed full of stories, drama, art and singing. The whole school took part in the costume parade in assembly which dazzled the staff and friends alike. Our competitions proved very popular with the winning entries being celebrated in assembly as they showed us their Extreme Reads, bookmarks and Potato Head characters. It proved very difficult to judge just three entries, one from each year group, so Mrs Godfrey and Mrs Jukes from the office made the final decisions. The 3 bookmark designs have been copied and laminated to be sold next week by the School Council and the Potato characters can be seen below. Thank you for always supporting World Book Day by helping your children to dress up, it really makes for a wonderful day full of smiles.



**BookPeople**  
Hand-picked favourites at unbelievable prices [.co.uk](http://www.bookpeople.co.uk)

Our bookfair will be taking place in the atrium on Monday after school and will be the last chance to buy a wonderful book. They are hugely discounted, and all sales contribute to commission for the school to spend on books for the classes. Many thanks for your support so far.

### Easter Competition Time!

Mrs Hayward would like to inform you all that she will be holding an Easter Egg competition. There will be 4 categories: Reception, Year 1, Year 2 and Parents and Carers!

She would like anyone willing to take part in the competitions to design an Easter egg on a sheet of paper that is no bigger than A4.

Mrs Hayward will be looking for creative designs to be added to the hall display.

Competition entries back to school by **Monday 25<sup>th</sup> March**

Winners will be told Friday 29<sup>th</sup> March

Please ensure that child's name and class is on the back (and for adult entries the adults name as well!)

**GOOD LUCK EVERYONE**



# Barnes Farm Infant School Easter Coffee & Cake Sale Thursday 4<sup>th</sup> April 2019

Tea, coffee and cakes available in the school  
hall for parents from 2:15pm.

Cake sale from the Atrium Doors from 3:15pm

Teas/Coffees – 50p

Cakes – 50p

All proceeds will go towards resources for our Owlets Nurture Base  
and developing the school environment



### Non-Pupil Dates 2019 – 2020

Many of you have been asking about holiday dates 2019 – 2020. The following dates have been set as our non-pupil dates for 2019-2020 in addition to the county holiday dates for this academic year.

- 3<sup>rd</sup> Sept
- 4<sup>th</sup> Nov
- 6<sup>th</sup> Jan
- 24<sup>th</sup> February
- 22<sup>nd</sup> May

### Volunteers

If you are happy to listen to children read on a regular basis or would be able to support us test the children on their Challenge Me Cards for Mathematics, please come and see me on the playground.

### Barnes Farm Infants Governing Body

Heidi Hards - Chair of Governors - Parent Governor  
Rebecca Pascoe-Youell - Vice Chair of Governors - Community Governor  
Ana Johnson - Parent Governor  
Valerie Bellamy- Community Governor  
Susannah Wookey- Community Governor  
Kate Sutton- Community Governor  
Mrs Z. Farmer - Head teacher  
Mrs E Speller – Deputy Head teacher and Staff Governor  
Elizabeth Keeley - Community Governor

### Diary of Events

#### **SPRING TERM 2**

<b>Monday 25<sup>th</sup> February</b>	Pupils back	Doors open at 8:45am
<b>Wednesday 27<sup>th</sup> February</b>	<b>Parents Evening – 3.30pm-6.00pm</b>	Infant School Hall To be booked on Website
<b>Thursday 28<sup>th</sup> February</b>	<b>Parents Evening – 5.30pm-8.00pm</b>	Infant School Hall To be booked on Website
<b>Thursday 7<sup>th</sup> March</b>	<b>World Book Day</b>	Children to dress up as their favourite book character.
<b>Friday 8<sup>th</sup> March</b>	<b>Year 1 Parents Phonics Workshop – 9.15am</b>	Infant School Hall
<b>Thursday 14<sup>th</sup> March</b>	<b>Parent and Carer Assembly Otter 9.15am</b>	Infant School Hall. No need to book, just turn up.
<b>Thursday 14<sup>th</sup> March</b>	<b>Year 2 School Trip - Cathedral and Mosque</b>	



<b>Thursday 14<sup>th</sup> March</b>	<b>Movie and Munch</b>	Permission Slip and Payment to be made on Parentpay by 11 <sup>th</sup> March
<b>Monday 18<sup>th</sup> March</b>	<b>KS1 Tag Rugby Competition</b>	Writtle College (Invited pupils)
<b>Tuesday 19<sup>th</sup> March</b>	<b>KS1 Gymnastic Competition</b>	CSAC (Invited pupils)
<b>Thursday 21<sup>st</sup> March</b>	<b>Infant Music Festival</b>	
<b>Saturday 23<sup>rd</sup> March</b>	<b>DIY SOS</b>	All Volunteers Welcome
<b>Tuesday 26<sup>th</sup> March</b>	<b>Epilepsy Awareness Day</b>	Wear something PURPLE. Not a fundraiser but a way to raise awareness in school.
<b>Thursday 28<sup>th</sup> March</b>	<b>Parent and Carer Assembly</b> <b>Badger</b> 9.15am	Infant School Hall. No need to book, just turn up.
<b>Thursday 28<sup>th</sup> March</b>	<b>Cheerleading Competition</b>	CSAC (Invited pupils)
<b>Monday 1<sup>st</sup> April</b>	<b>Year 1 School Trip –</b> Mountfitchet Castle	
<b>Thursday 4<sup>th</sup> April</b>	<b>Easter Cake Sale</b>	
<b>Friday 5<sup>th</sup> April</b>	Last Day of Term	

**SCHOOL CLOSSES FOR HOLIDAYS – Friday 5<sup>th</sup> April at 3.15pm**

**EASTER HOLIDAY – Monday 8<sup>th</sup> April – Monday 22<sup>nd</sup> April**

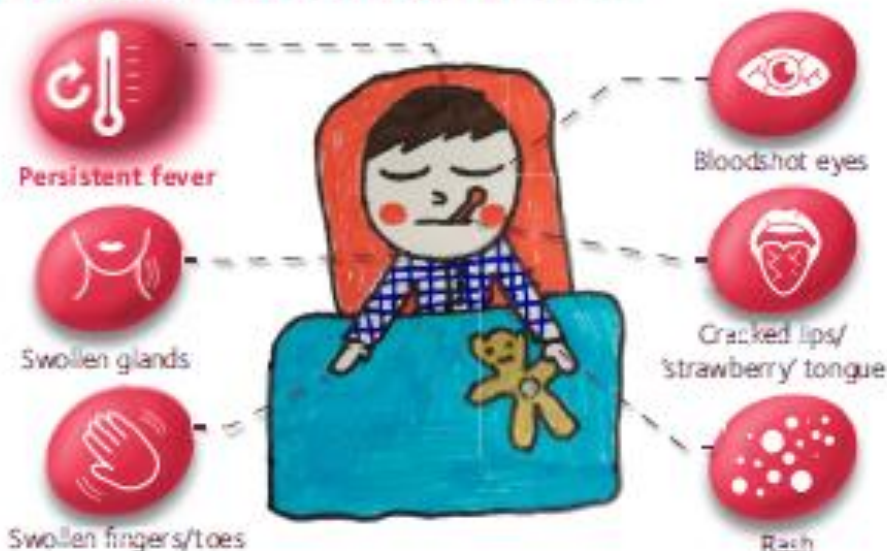
# THINK Kawasaki Disease



**Kawasaki Disease is the leading cause of acquired heart disease in children in the UK. It's time we changed that...**

**...Together we will**

## Kawasaki Disease Symptoms:



Kawasaki Disease is **increasingly common** in the UK

If a child has a **persistent high fever** for 5 days or more, with **TWO** or more of these symptoms please **THINK Kawasaki Disease**

**Kawasaki Disease** can be present with some or all of these symptoms

Please **EXPECT** to see it, be **READY** to treat it!

Society Foundation, registered charity (England and Wales) no. 1172253

## EARLY TREATMENT IS KEY ...PLEASE DON'T DELAY

Children diagnosed and treated in **less than 7 days** from onset of fever have a much reduced risk of life long heart damage

**Kawasaki Disease** is predominantly a childhood illness. Its cause is unknown. **Kawasaki Disease is the leading cause of acquired heart disease in children.** It is often mistaken for other common childhood illnesses, leading to delayed treatment. Children who go untreated or who are treated later face significantly higher risks of developing serious complications including life long heart damage. Babies under one year are at greatest risk of serious heart damage. **Early diagnosis and treatment is critical.**

### Current UK & Ireland Outcomes for Kawasaki Disease



**TOGETHER WE CAN CHANGE THIS!**

Source: data from Taha et al. Kawasaki Disease: a prospective population survey UK & Ireland 2013-15

 @SocietyFoundation  
 @Society\_UK\_KD  
[www.justgiving.com/society](http://www.justgiving.com/society)

**society**  
The UK Foundation for Kawasaki Disease

  
[society.org.uk](http://society.org.uk)