

Today's tasks

Date: 23.04.20



English - Writing (20 mins)

WALT: use capital letters and full stops



Using the 4 pictures above, write 4 perfect sentences.

Remember a perfect sentence needs:

- A capital letter
- A full stop
- Finger spaces
- Correct letter formation
- The letters sitting on the line
- To make sense

Presentation expectation

Children to complete work in their **Purple Home Learning book**. Date and WALT to be written at the top of the page.

Website to visit/game

<https://www.bbc.co.uk/bitesize/topics/zd63xyc/articles/zdp4pg8>

Challenge Activity

Draw 4 of your own pictures and write the 4 matching perfect sentences.

Maths – Position and direction (20 mins)



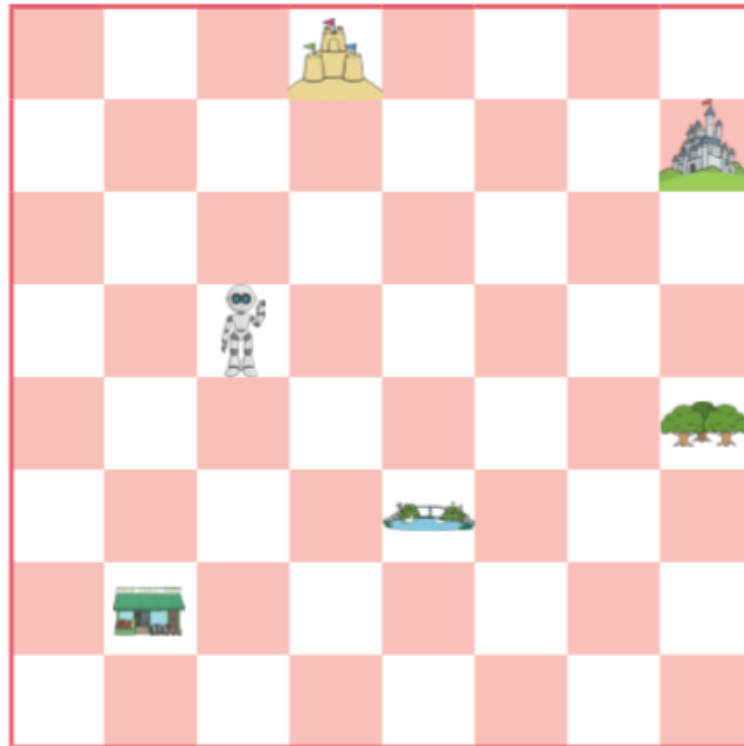
WALT: Understand Position and direction

Move Ricky Robot:

- Left 2
- Up 3
- Right 2
- Down 7
- Left 1
- Up 1

Where will the robot finish?

Can you direct the robot from the castle to the shop?



Presentation expectation

Children to complete work in their **Purple Home Learning book**. Date and WALT to be written at the top of the page.

Website to visit/game

Espresso- geometry- position and direction videos

https://central.espresso.co.uk/espresso/primary_uk/subject/module/video/item883127/grade1/module883106/index.html

Challenge Activity

Create your own map like the one above and write instructions on how to get to the different objects.

Active Task



Make up a dance to your favourite song and perform it to someone. You could upload a video to Seesaw.

Creative Task (15 mins)



Use a mirror to look at your face and its features.
Draw a self portrait using the mirror to help you.





Act of Kindness Task

Help wash and tidy up after dinner.

Today's Story



Log on to Collins Big Cat Books - Login details are in your Home Learning Pack / Reading Diaries.

<https://connect.collins.co.uk/school/portal.aspx>

Read a book from your colour band. Let us know what you think of your book.

Read and share your favourite book with someone.

What do you like about that book?



Topic Task (15 mins)

WALT: Identify living and non-living

Look at the lists you made you living and non-living things.

Can you explain some of the differences between something that is living and something that is non-living?

Have any of the non-living objects once lived? How do you know?

Screen time warning.

While some tasks involve a device with a screen such as an iPad, computer, laptop, tablet, phone or TV, not all tasks will require such a device.

It is important that children do not spend too much time in front of a screen (learning or having some down time) and are enjoying other activities such as colouring, drawing, playing with toys, being active, reading and interacting with those at home.

Thank you.