

Today's tasks

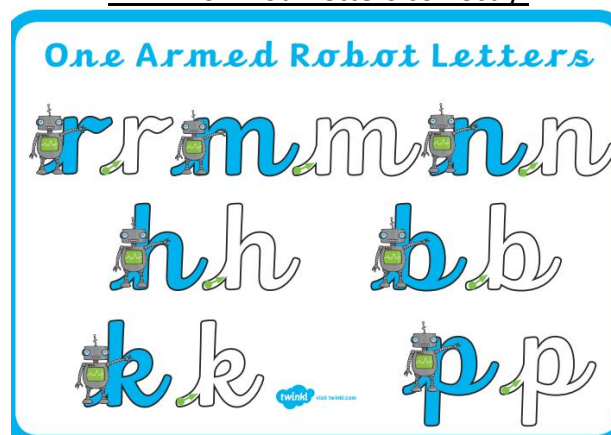
Date: Tuesday 12<sup>th</sup> May 2020

Don't forget to have a look at our website to see awareness days/ festivals happening this week.

<https://www.barnesfarminfants.co.uk/page/?title=%2A+Week+Commencing+04%2E05%2E2020&pid=519>



English – Writing (20 minutes)  
WALT form our letters correctly.



Today we will be practising our handwriting, concentrating on the One-Armed Robot family of letters.

Here is the whole alphabet so you can see where the letters sit on the lines. Can you see the tail (or descender) of the p hangs below the line while its head sits on the black line? Also the k, h and b are tall letters that have an ascender that reaches up to the dotted red line.

Now write the One-Armed robots in your **purple books or any notebook**. Don't forget your wooshes in and out. Please write a line of each and then a line of the same letters but in their capital (upper case) version.

Website to visit/game: Watch how to form your letters on Sky Writer – choose the cursive option.

<http://www.ictgames.com/mobilePage/skyWriter/index.html>

**Challenge Activity:** After practising your handwriting you could still write your weekly diary entry.

Aa Bb Cc Dd  
Ee Ff Gg Hh Ii  
Jj Kk Ll Mm  
Nn Oo Pp Qq  
Rr Ss Tt Uu Vv  
Ww Xx Yy Zz

Maths - (25 minutes)  
WALT add and subtract.



This week's home learning will be using the White Rose videos. Please watch the video together, then click on the link to BBC Bitesize to the right of the video. This will take you to the BBC lessons – choose today's lesson and then scroll down to the activity sheet. The content mirrors the White Rose lessons. Please complete the activity by copying into your **purple book or any notebook**. Practise drawing your own number lines using a ruler if you can!

Today's lesson can be found here <https://whiterosemaths.com/homelearning/year-1/> Summer Term – week 4 (w/c 11<sup>th</sup> May) Lesson 2.

Website to visit/game: Try out the mathematics games on the BBC site. Karate Cats is one we tried before.

**Challenge Activity:** You could have a go at the other activities on the BBC Bitesize lesson.

<https://www.bbc.co.uk/bitesize/tags/zipqqp3/year-1-and-p2-lessons/1>



Phonics (10 minutes)  
Alternative ways of saying a.

Practise reading these tricky words – water, where, who, again, thought, through, work, mouse.

Write the words below onto some small pieces of paper. Now read them and sort them into the different ways we say the a.

**Bath, squad, hat, wander, splash, want, was, bacon, angel, band, path, after, apricot, fast, bagel, grass, what, laptop, grand, apron.** (Clue: there are four ways).

**Challenge:** Can you write a silly sentence using any of these words?

Active Task



Set up a target game inside or outside using buckets, bowls or baskets. Decide on what each container is worth (you could count in 5s or 10s). If you don't have small balls or beanbags, roll up socks to make a ball.

Now challenge someone to play! Who can get the highest score?





### Creative Task

Imagine you have found the door to a secret garden.  
Peer through the keyhole and draw a picture of what you can see. Use something round and a ruler to draw an outline of a keyhole on your page.



### Act of Kindness Task

If you have an outside space, water the plants. Plants need kindness too!

### Today's Story

Enjoy this story if you wish. It is about one of our Owl Code values. Can you tell your adult which one?

<https://www.storylineonline.net/books/the-empty-pot/>



Choose one of your favourite books from your bookshelf or from the Big Cat Library and have a read.



### Topic Task - Eating Plants (15 minutes)

WALT identify the parts of a plant.

What plants do you eat? And what parts of the plant do they come from?  
Let's find out this week.

We will start by recapping what we learnt last week. Use Discovery Espresso – go to Key Stage 1, Science, Plants or follow the links. See below for the login and password.

[https://central.espresso.co.uk/espresso/primary\\_uk/subject/module/factfile/item1236173/grade1/module1197183/index.html](https://central.espresso.co.uk/espresso/primary_uk/subject/module/factfile/item1236173/grade1/module1197183/index.html)

Then test your knowledge with the labelling activity.

[https://central.espresso.co.uk/espresso/primary\\_uk/subject/module/activity/item1236024/grade1/module1197183/index.html](https://central.espresso.co.uk/espresso/primary_uk/subject/module/activity/item1236024/grade1/module1197183/index.html)

How did you do?

A reminder of our log in  
for Discovery Espresso.

**Barnes Farm Infant School**

**Username**  
student32247

**Password**  
barnes

Log in at:  
[www.discoveryeducation.co.uk](http://www.discoveryeducation.co.uk)

When visiting our website, click "Login" from the top-right of  
the page and select *Espresso* to enter the above credentials.

**Screen time warning.**

While some tasks involve a device with a screen such as an iPad, computer, laptop, tablet, phone or TV,  
not all tasks will require such a device.

It is important that children do not spend too much time in front of a screen (learning or having some  
down time) and are enjoying other activities such as colouring, drawing, playing with toys, being active,  
reading and interacting with those at home.

Thank you.